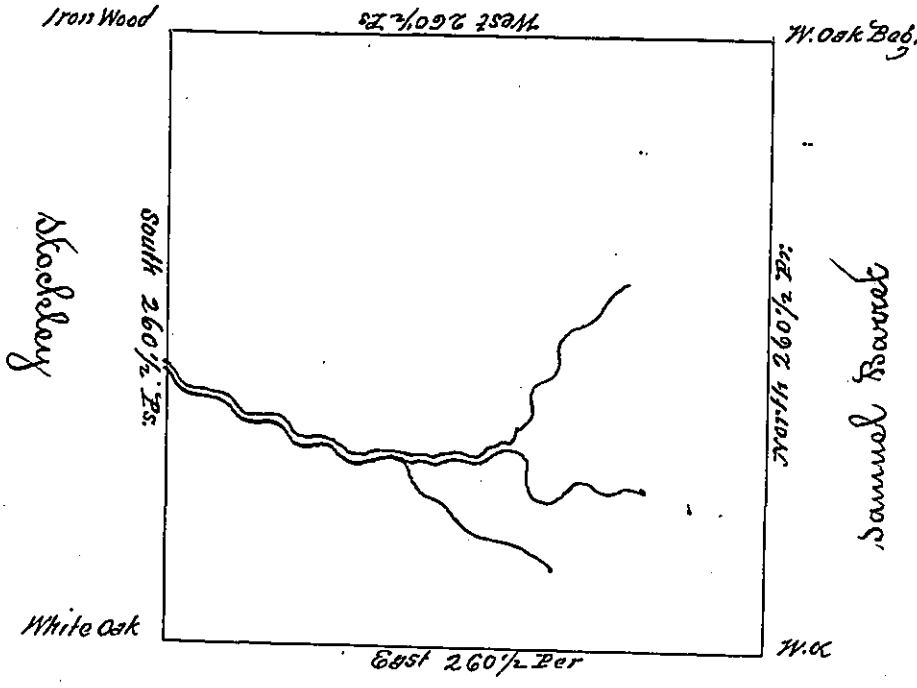


Henry Bryan



Samuel Barrett

John Clarke

The above is a draught of survey made March 29<sup>th</sup> 1785 in pursuance of a Warrant granted James Thomson dat<sup>d</sup> Sept 13<sup>th</sup> 1784 containing 400 acres with allowance call<sup>d</sup> Woolly Den situate situate on Waters of Wheeling Creek.

John Loukens Esq<sup>r</sup>  
 S. G.

J<sup>r</sup> Hoage D.D.

IN TESTIMONY that the above is a copy of the original remaining on file in the Department of Internal Affairs of Pennsylvania, made conformably to an Act of Assembly approved the 16th day of February, 1833, I have hereunto set my Hand and caused the Seal of said Department to be affixed at Harrisburg, this sevent day of June 1898.

Secretary of Internal Affairs.